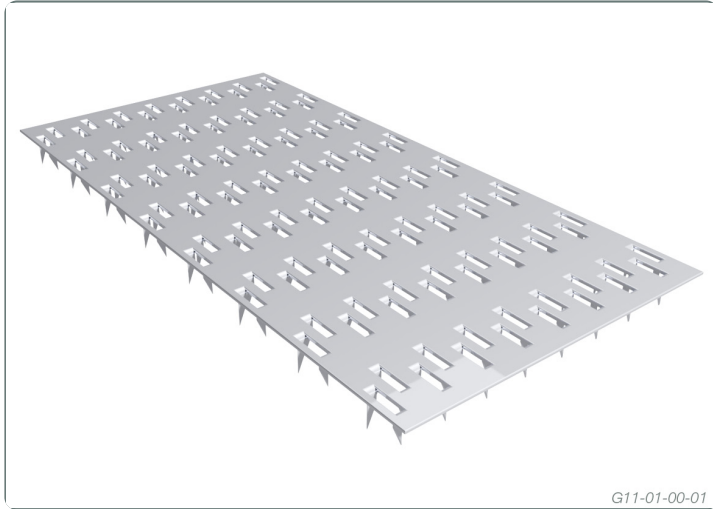


Stainless Steel Truss Plates



Formed stainless steel connector designed to provide an effective means of fastening two timber members together under high loads

These formed stainless steel connectors:

Incorporate preformed teeth making it quick and easy to press into timber.

Teeth are spaced accordingly to eliminate timber splitting.

Twisted tooth provide reduces tooth withdrawal.

Have a higher resistance to corrosion than standard galvanised plates.

NAILPLATES

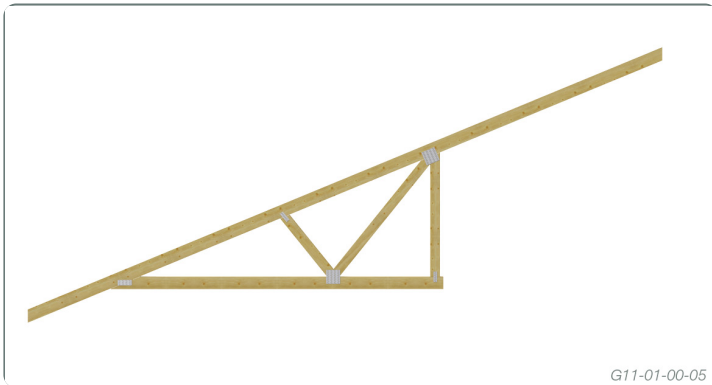
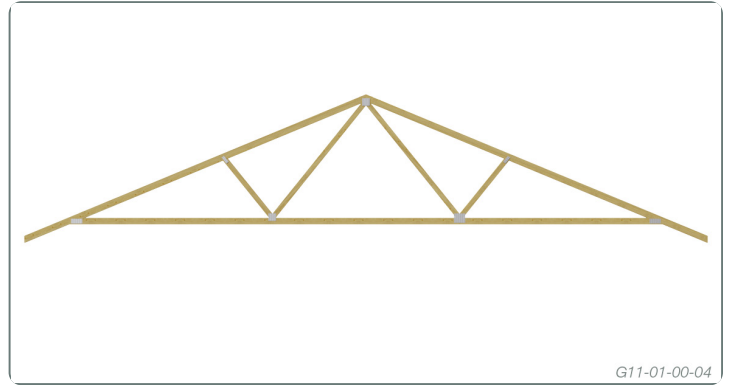
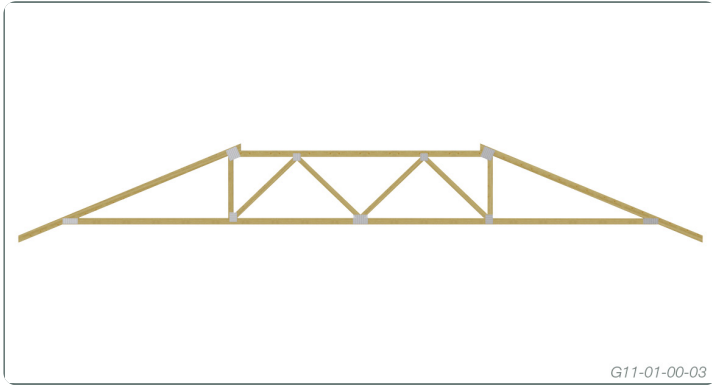
Multinail nailplates incorporate many refinements, particularly in the tooth profile and size, that is designed to grip the timber more securely. The bending and twisting of teeth during manufacture was carefully designed to aid the transfer of forces across the finished joint.

The nailplate is the ideal choice of fabricators for the joining of multiple timber members as they are designed to provide excellent holding power (with eight teeth per square inch) at a low cost per truss.

Nailplate have a uniquely-designed tooth shape that gives the nailplate full penetration and holding power.

TYPICAL APPLICATIONS

Nailplates are used in the manufacture of timber roof truss, floor trusses and butt jointed timber members like roof rafters and floor joists.



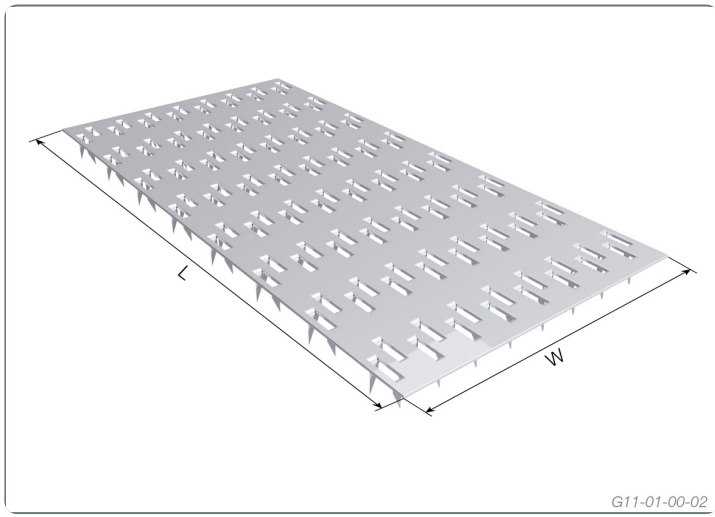
FEATURES

- Long teeth
- Low plate cost per truss
- Penetrates high density hardwoods
- Eliminates tooth bending and wood splitting
- High force transfer per unit area
- High holding power in hardwoods and softwoods
- Prime quality stainless steel

DESCRIPTION AND PACKAGING

Manufactured from 0.9mm Minimum Grade 316 Stainless Steel

Description	Product Code	Reference Code	Carton quantity	Carton kg.
W x L				
50 x 100 x 0.9	SS50100	SMN050100	1	
50 x 150 x 0.9	SS50150	SMN050150	1	
64 x 100 x 0.9	SS64100	SMN064100	1	
64 x 150 x 0.9	SS64150	SMN064150	1	
64 x 200 x 0.9	SS64200	SMN064200	1	
75 x 100 x 0.9	SS75100	SMN075100	1	
75 x 125 x 0.9	SS75125	SMN075125	1	
75 x 150 x 0.9	SS75150	SMN075150	1	
75 x 200 x 0.9	SS75200	SMN075200	1	
75 x 250 x 0.9	SS75250	SMN075250	1	
75 x 300 x 0.9	SS75300	SMN075300	1	
100x 75 x 0.9	SS10075	SMN100075	1	
100 x 100 x 0.9	SS100100	SMN100100	1	
100 x 125 x 0.9	SS100125	SMN100125	1	
100 x 150 x 0.9	SS100150	SMN100150	1	
100 x 200 x 0.9	SS100200	SMN100200	1	
100 x 250 x 0.9	SS100250	SMN100250	1	
100 x 300 x 0.9	SS100300	SMN100300	1	
100 x 400 x 0.9	SS100400	SMN100400	1	
125 x 100 x 0.9	SS125100	SMN125100	1	
125 x 125 x 0.9	SS125125	SMN125125	1	
125 x 150 x 0.9	SS125150	SMN125150	1	
125 x 200 x 0.9	SS125200	SMN125200	1	
125 x 250 x 0.9	SS125250	SMN125250	1	
125 x 300 x 0.9	SS125300	SMN125300	1	
125 x 400 x 0.9	SS125400	SMN125400	1	
150 x 100 x 0.9	SS150100	SMN150100	1	
150 x 125 x 0.9	SS150125	SMN150125	1	
150 x 150 x 0.9	SS150150	SMN150150	1	
150 x 200 x 0.9	SS150200	SMN150200	1	
150 x 250 x 0.9	SS150250	SMN150250	1	
150 x 300 x 0.9	SS150300	SMN150300	1	
150 x 350 x 0.9	SS150350	SMN150350	1	
150 x 400 x 0.9	SS150400	SMN150400	1	



Due to continual product improvement Multinail Australia Pty Ltd. reserves the right to change the product/s depicted - both in description and specification.
This document has to be read in conjunction with Multinail's Technical Manual.