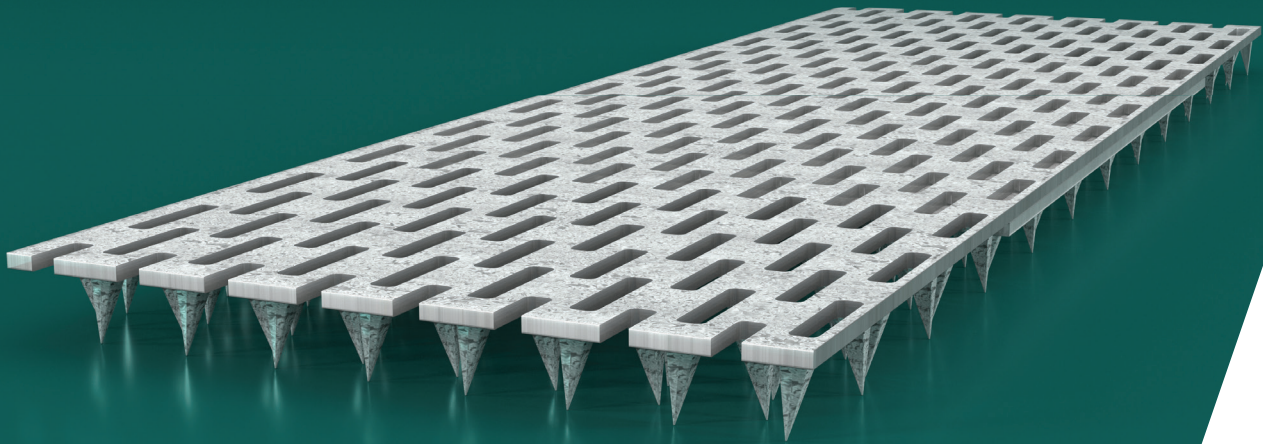


Multinail MD Truss Plate



Multinail nailplates are precisely formed galvanised steel connectors. They are uniquely designed to provide effective means of fastening timber members together under high loads.

Benefits of MD Truss Plates

High performance product developed from an inventive manufacturing process that bends and twists the teeth to aid the transfer of forces across the finished joint.

- Unique tooth shape ensures full penetration with strong holding power
- Eliminating nailplate teeth bending and wood splitting
- High force transfer per unit area
- Economical with low nailplate cost per truss
- Capable of penetrating high density hardwood timber
- Premium quality galvanised steel
- Made in Australia

Application

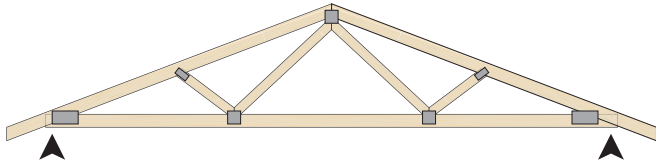


Figure 1: Standard shape trusses

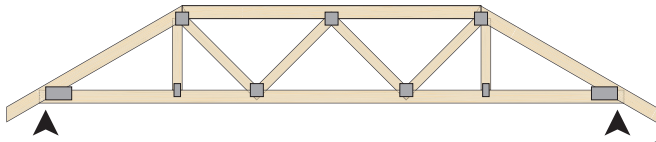


Figure 2: Truncated shape trusses

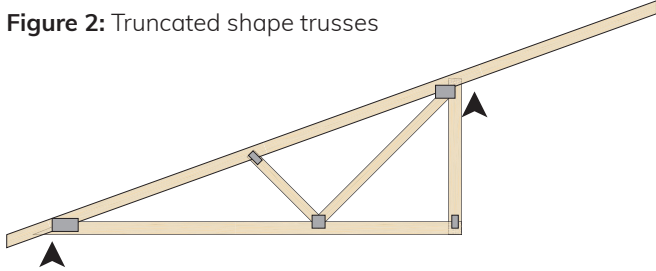


Figure 3: Half/cut-off trusses

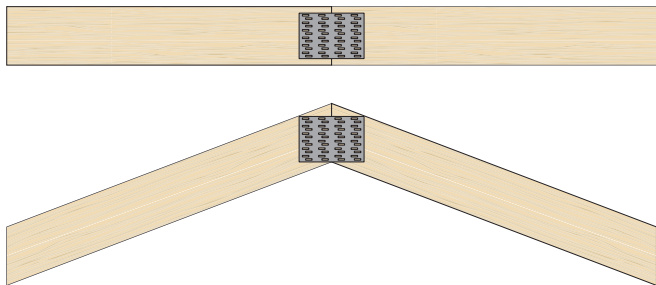


Figure 4: Butt Joining

Exploded View

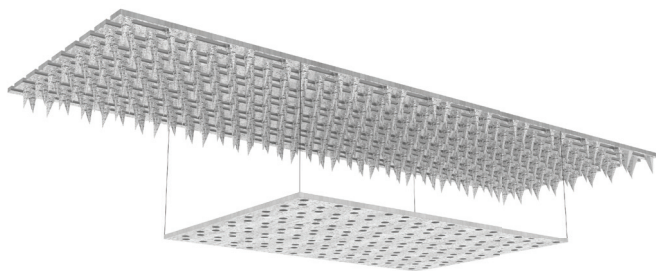


Figure 5: MD Truss Plate exploded view

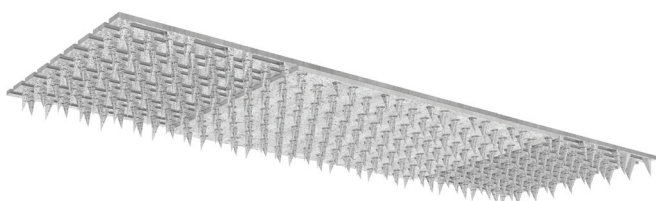
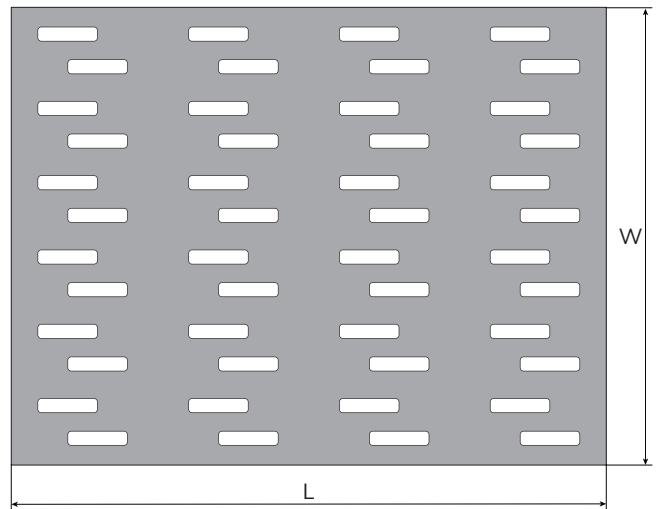


Figure 6: Finished view of MD Truss Plate

Technical Specifications

Steel

G300 Steel, Z275, 2mm Thickness



Description and Packing

PRODUCT CODE	DESCRIPTION W x L with W x L x T	CARTON QTY	PALLET QTY	CARTON KG.
MD64300	64 x 300 with 64 x 150 x 2.0mm	84	64	19.7
MD75300	75 x 300 with 75 x 150 x 2.0mm	72	64	20.1
MD100300	100 x 300 with 100 x 150 x 2.0mm	48	64	18.1
MD100400	100 x 400 with 100 x 200 x 2.0mm	36	64	18.0
MD125300	125 x 300 with 125 x 150 x 2.0mm	36	64	17.0
MD150300	150 x 300 with 150 x 150 x 2.0mm	30	64	17.1
MD150400	150 x 400 with 150 x 200 x 2.0mm	20	64	15.0
MD175300	175 x 300 with 175 x 150 x 2.0mm	20	64	13.4
MD175400	175 x 400 with 175 x 200 x 2.0mm	12	64	10.5



Personalised. Local. Progressive.

Multinail Australia Pty. Ltd.

155 Burnside Road, Stapylton

QLD 4207, Australia

Phone: +61 (0)7 3297 3250

Email: enquiry@multinail.com

www.multinail.com.au