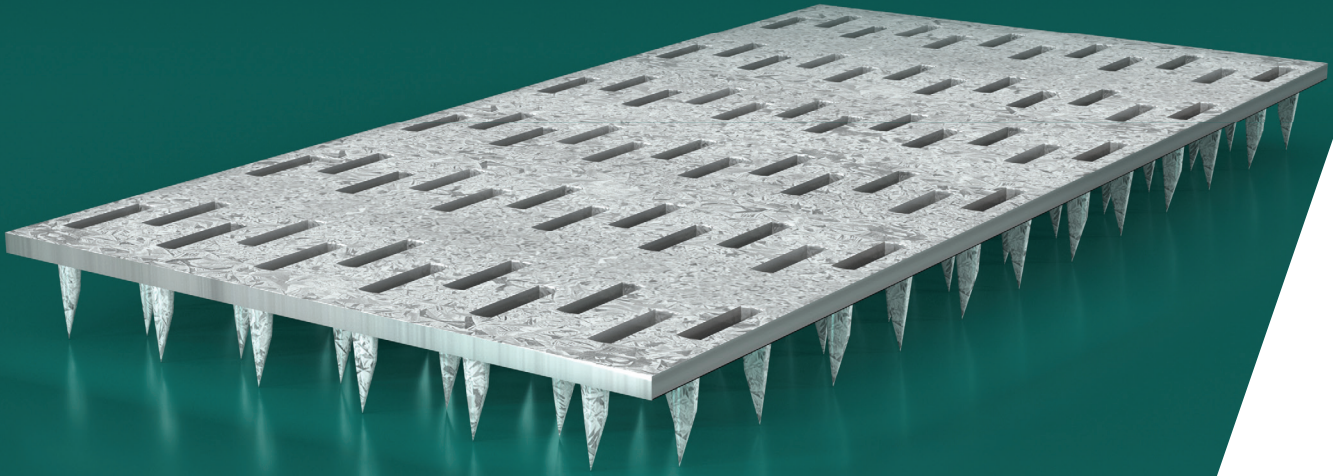


Multinail MNH Truss Plate



Multinail nailplates are precisely formed galvanised steel connectors. They are uniquely designed to provide effective means of fastening timber members together under high loads.

Benefits of MNH Truss Plates

High performance product developed from an inventive manufacturing process that bends and twists the teeth to aid the transfer of forces across the finished joint.

- Unique tooth shape ensures full penetration with strong holding power
- Eliminating nailplate teeth bending and wood splitting
- High force transfer per unit area
- Economical with low nailplate cost per truss
- Capable of penetrating high density hardwood timber
- Premium quality galvanised steel
- Made in Australia

Application

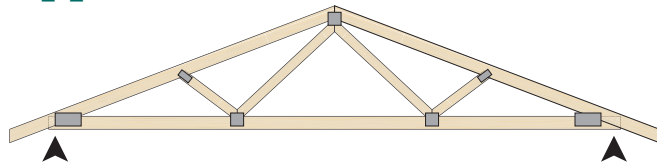


Figure 1: Standard shape trusses

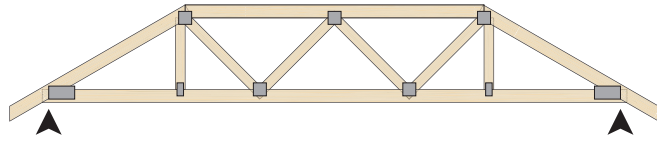


Figure 2: Truncated shape trusses

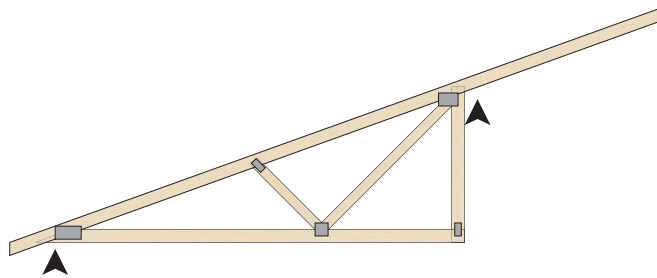


Figure 3: Half/cut-off trusses

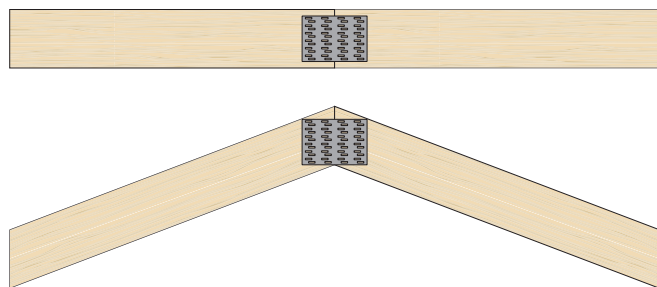


Figure 4: Butt joining

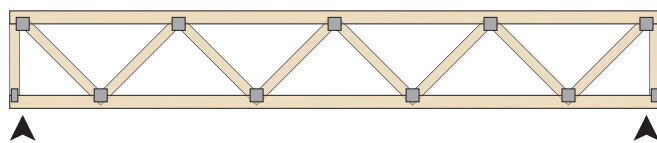
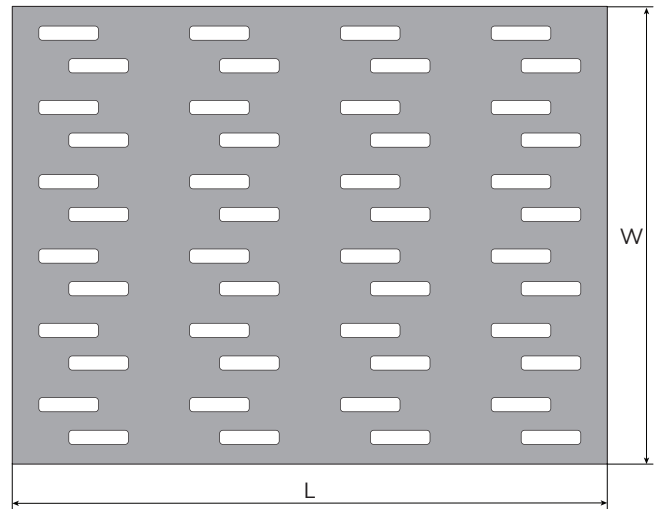


Figure 5: Parallel Trusses

Technical Specifications

Steel G300 Steel, Z275, 1.5mm Thickness



Description and Packing

| Product Code | Description W x L x T | Carton Qty | Pallet Qty | Carton kg. |
|--------------|--------------------------|------------|------------|------------|
| MNH64150 | 64 x 150 x 1.5mm | 140 | 48 | 17.0 |
| MNH64200 | 64 x 200 x 1.5mm | 100 | 48 | 16.1 |
| MNH64300 | 64 x 300 x 1.5mm | 84 | 64 | 20.2 |
| MNH75150 | 75 x 150 x 1.5mm | 144 | 64 | 20.7 |
| MNH75200 | 75 x 200 x 1.5mm | 104 | 64 | 20.1 |
| MNH75300 | 75 x 300 x 1.5mm | 72 | 64 | 20.8 |
| MNH100150 | 100 x 150 x 1.5mm | 108 | 64 | 20.7 |
| MNH100200 | 100 x 200 x 1.5mm | 80 | 64 | 20.4 |
| MNH100250 | 100 x 250 x 1.5mm | 60 | 64 | 19.1 |
| MNH100300 | 100 x 300 x 1.5mm | 48 | 64 | 18.5 |
| MNH100400 | 100 x 400 x 1.5mm | 36 | 64 | 18.6 |
| MNH125150 | 125 x 150 x 1.5mm | 84 | 64 | 19.5 |
| MNH125200 | 125 x 200 x 1.5mm | 56 | 64 | 17.9 |
| MNH125300 | 125 x 300 x 1.5mm | 42 | 64 | 19.9 |
| MNH125400 | 125 x 400 x 1.5mm | 28 | 64 | 17.9 |
| MNH150150 | 150 x 150 x 1.5mm | 60 | 64 | 17.3 |
| MNH150200 | 150 x 200 x 1.5mm | 48 | 64 | 18.9 |
| MNH150300 | 150 x 300 x 1.5mm | 36 | 64 | 20.8 |
| MNH150400 | 150 x 400 x 1.5mm | 24 | 64 | 18.4 |
| MNH175200 | 175 x 200 x 1.5mm | 28 | 64 | 12.7 |
| MNH175300 | 175 x 300 x 1.5mm | 28 | 64 | 18.7 |
| MNH175400 | 175 x 400 x 1.5mm | 20 | 48 | 18.0 |



Personalised. Local. Progressive.

Multinail Australia Pty. Ltd.
155 Burnside Road, Stapylton
QLD 4207, Australia
Phone: +61 (0)7 3297 3250
Email: enquiry@multinail.com
www.multinail.com.au