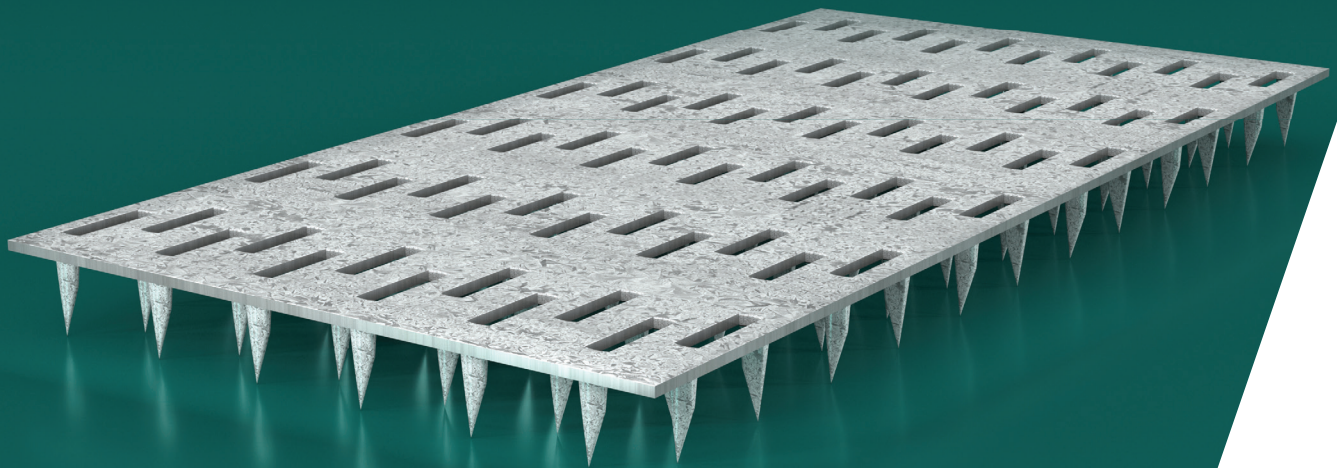


Multinail MN Truss Plate



Multinail nailplates are precisely formed galvanised steel connectors. They are uniquely designed to provide effective means of fastening timber members together under high loads.

Benefits of MN Truss Plates

High performance product developed from an inventive manufacturing process that bends and twists the teeth to aid the transfer of forces across the finished joint.

- Unique tooth shape ensures full penetration with strong holding power
- Eliminating nailplate teeth bending and wood splitting
- High force transfer per unit area
- Economical with low nailplate cost per truss
- Capable of penetrating high density hardwood timber
- Premium quality galvanised steel
- Made in Australia

Application

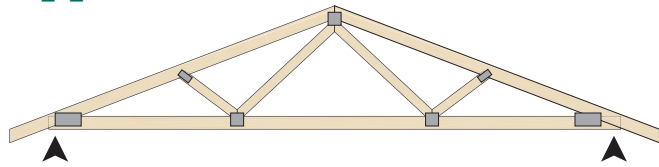


Figure 1: Standard shape trusses

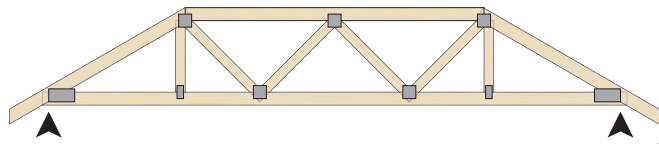


Figure 2: Truncated shape trusses

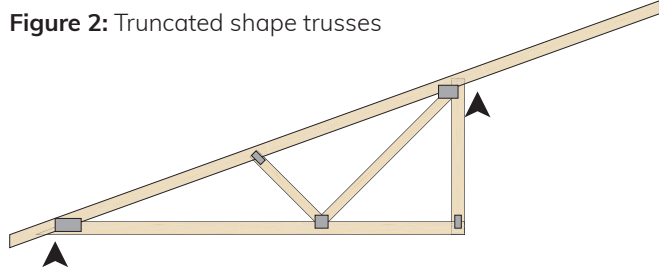


Figure 3: Half/cut-off trusses

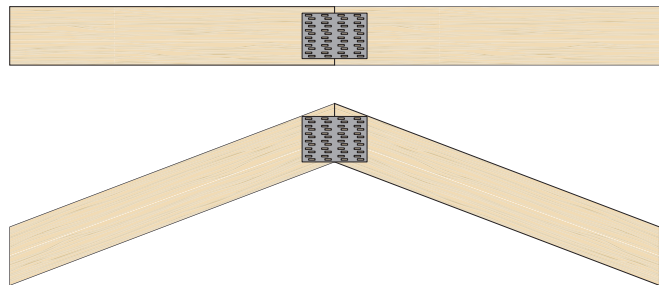


Figure 4: Butt Joining

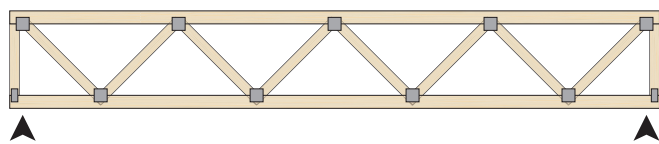
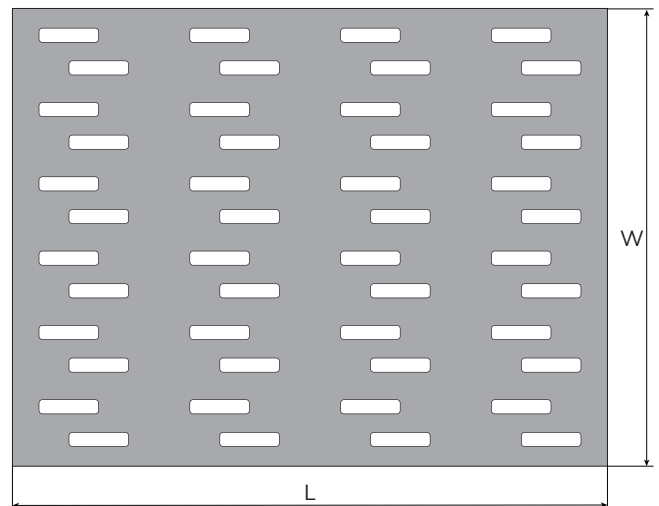


Figure 5: Parallel Trusses

Technical Specifications

Steel G300 Steel, Z275, 1mm Thickness



Description and Packing

Product Code	Description W x L x T	Carton Qty	Pallet Qty	Carton kg.
MN2575	25 x 75 x 1.0mm	660	48	11.2
MN38100	38 x 100 x 1.0mm	440	48	14.6
MN50100	50 x 100 x 1.0mm	300	48	13.2
MN50150	50 x 150 x 1.0mm	200	48	13.2
MN64100	64 x 100 x 1.0mm	240	48	13.3
MN64150	64 x 150 x 1.0mm	140	48	11.8
MN64200	64 x 200 x 1.0mm	100	48	11.3
MN75100	75 x 100 x 1.0mm	200	48	13.0
MN75125	75 x 125 x 1.0mm	100	64	8.4
MN75150	75 x 150 x 1.0mm	192	64	18.8
MN75200	75 x 200 x 1.0mm	136	64	17.5
MN75250	75 x 250 x 1.0mm	104	64	17.0
MN75300	75 x 300 x 1.0mm	96	64	18.8
MN10075	100 x 075 x 1.0mm	150	48	10.1
MN100100	100 x 100 x 1.0mm	216	64	18.6
MN100125	100 x 125 x 1.0mm	146	64	15.9
MN100150	100 x 150 x 1.0mm	126	64	16.3
MN100200	100 x 200 x 1.0mm	92	64	16.0
MN100250	100 x 250 x 1.0mm	70	64	15.1
MN100300	100 x 300 x 1.0mm	64	64	17.0
MN100400	100 x 400 x 1.0mm	48	64	16.6
MN125100	125 x 100 x 1.0mm	154	64	17.1
MN125125	125 x 125 x 1.0mm	96	64	13.2
MN125150	125 x 150 x 1.0mm	96	64	15.1
MN125200	125 x 200 x 1.0mm	64	64	13.7
MN125250	125 x 250 x 1.0mm	48	64	13.2
MN125300	125 x 300 x 1.0mm	48	64	15.7
MN125400	125 x 400 x 1.0mm	28	64	12.4
MN150100	150 x 100 x 1.0mm	144	64	18.7
MN150125	150 x 125 x 1.0mm	84	64	13.6
MN150150	150 x 150 x 1.0mm	96	64	18.8
MN150200	150 x 200 x 1.0mm	64	64	16.8
MN150250	150 x 250 x 1.0mm	48	64	15.7
MN150300	150 x 300 x 1.0mm	42	64	16.5
MN150350	150 x 350 x 1.0mm	28	64	12.9
MN150400	150 x 400 x 1.0mm	28	64	14.7
MN175150	175 x 150 x 1.0mm	64	64	14.5
MN175175	175 x 175 x 1.0mm	48	48	12.7
MN175200	175 x 200 x 1.0mm	48	48	14.8
MN175250	175 x 250 x 1.0mm	48	48	18.2
MN175300	175 x 300 x 1.0mm	32	64	14.5
MN175350	175 x 350 x 1.0mm	24	48	12.9
MN175400	175 x 400 x 1.0mm	24	48	14.7
MN200200	200 x 200 x 1.0mm	52	48	18.2



Personalised. Local. Progressive.

Multinail Australia Pty. Ltd.

155 Burnside Road, Stapylton

QLD 4207, Australia

Phone: +61 (0)7 3297 3250

Email: enquiry@multinail.com

www.multinail.com.au