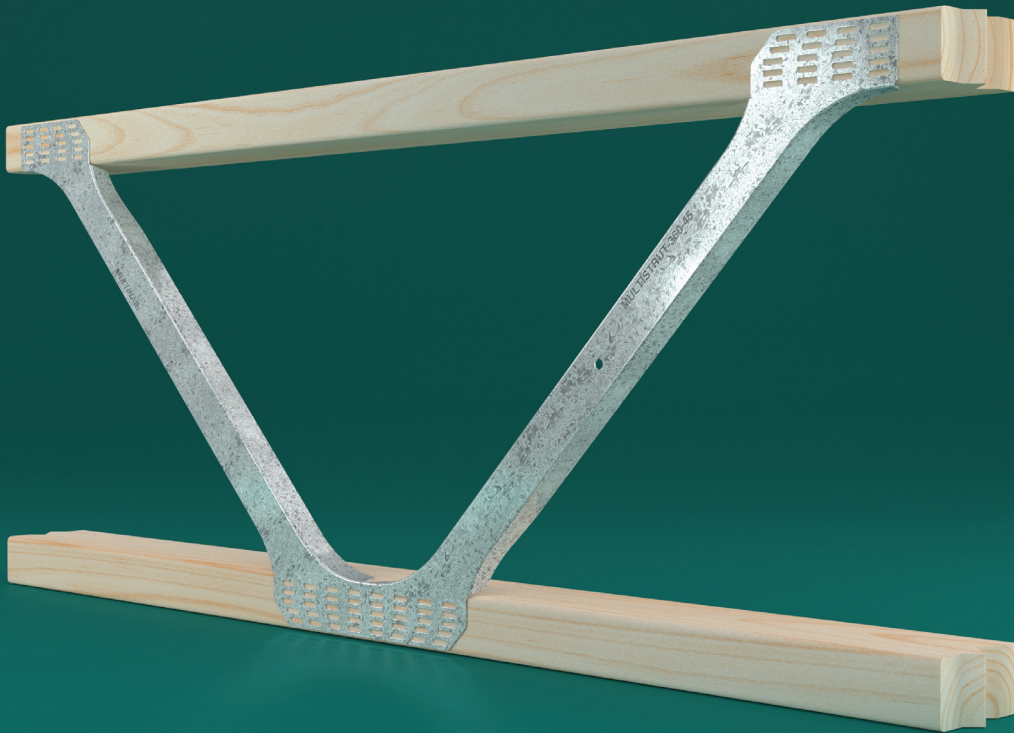


Multinail MultiStrut Web



MultiStrut webs are engineered to facilitate the efficient fabrication of parallel timber floor joists and roof rafters.

Benefits of MultiStrut Web

These Pre-punched and formed galvanised metal webs are:

- Lightweight systems for fast and efficient installation
- Open web design simplifies installation of services
- Available in multiple depth options to suit diverse structural requirements
- Made in Australia

Maximum clearance between webs

MultiStrut Joists are designed to allow the easy accommodation of electrical, plumbing, waste water and air conditioning services with no cutting on site.

Maximum clearance between the webs is as shown in Table 1.

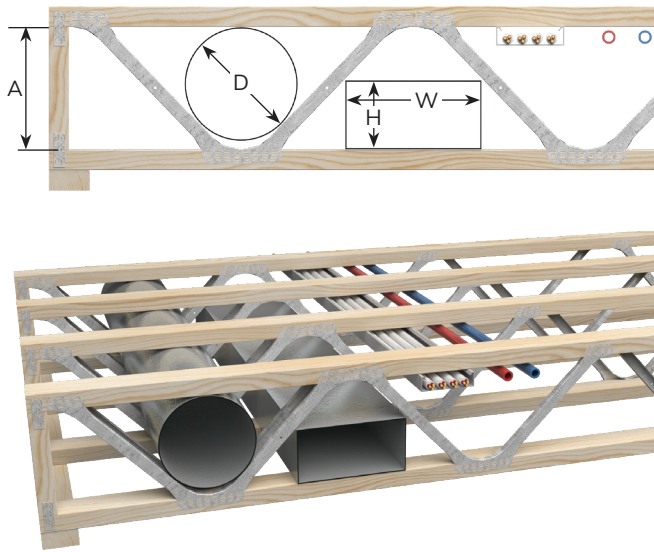


Figure 1

Table 1: Clearance for Service Penetrations

	MSJ200	MSJ250	MSJ300	MSJ360	MSJ400
A (mm)	125	160	210	270	323
D (mm)	120	150	200	250	280
H (mm)	W (mm)				
50	280	300	330	400	500
100	140	200	250	350	410
150	N/A	70	170	300	330
200	N/A	N/A	70	210	250
250	N/A	N/A	N/A	110	170
300	N/A	N/A	N/A	N/A	70

Notes:

1. Timber chords of the MultiStrut Joist must not be cut, notched or drilled in any way without engineering approval.
2. MultiStrut metal webs of the MultiStrut Joist must not be drilled, bent or removed in any way without engineering approval.

Indicative Span Table - MultiStrut Joist

Table 2: Maximum spans for Residential Floor Live Loads (1.5kPa/1.8kN)

Maximum Span (mm) - 1.5kPa/1.8kN				
MultiStrut Joist size	Overall depth (mm)	Timber size (MGP10)	450 centres	600 centres
MSJ200-45	215	45 x 90	4800	4000
MSJ250-45	250	45 x 90	5400	5200
MSJ300-35	300	35 x 90	5400	4200
MSJ300-45	300	45 x 90	5800	5400
MSJ360-45	360	45 x 90	6000	5600
MSJ400-45	413	45 x 90	6800	5800

Table 3: Maximum spans for Commercial Floor Live Loads (3.0kPa/2.7kN)

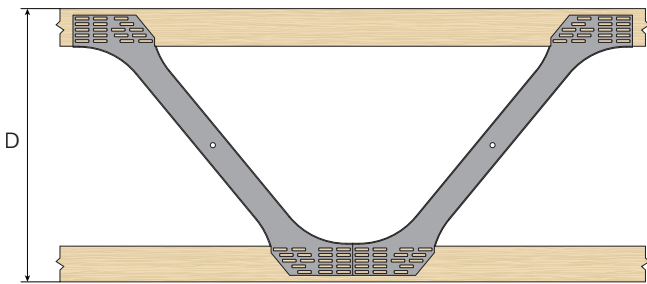
Maximum Span (mm) - 3.0kPa/2.7kN				
MultiStrut nominal size	Overall depth (mm)	Timber size (MGP12)	450 centres	600 centres
MSJ300-45	300	45 x 90	5200	4000
MSJ360-45	360	45 x 90	5400	4200
MSJ400-45	413	45 x 90	6000	5000

Note:

Spans and depths can vary depending on the size and grade of the timber chords selected. As the live loads increase over 3kPa need the thickness and grade of timber flooring panels will also increase.

Technical Specifications

Steel G300 Steel, Z275, 1mm Thickness



Description and Packing

Nominal Depth - 35mm Chords

Product Code	Description D	Carton Qty	Carton kg.
300mm overall depth†			
MSW30035	300mm - Bundle of 20	20	6.1
MSW30035P	300mm - Pallet of 2000	2000	611.0
MSW30035P7	300mm - 7 Pallets of 2000	14000	4277.0

Nominal Depth - 45mm Chords

Product Code	Description D	Carton Qty	Carton kg.
200mm overall depth*			
MSW20045	200mm - Bundle of 20	20	5.6
MSW20045P	200mm - Pallet of 2400	2400	679.2
MSW20045P7	200mm - 7 Pallets of 2400	16800	4754.4
250mm overall depth*			
MSW25045	250mm - Bundle of 20	20	5.4
MSW25045P	250mm - Pallet of 2400	2400	652.8
MSW25045P7	250mm - 7 Pallets of 2400	16800	4569.6
300mm overall depth*			
MSW30045	300mm - Bundle of 20	20	6.1
MSW30045P	300mm - Pallet of 2000	2000	611.0
MSW30045P7	300mm - 7 Pallets of 2000	14000	4277.0
360mm overall depth*			
MSW36045	360mm - Bundle of 20	20	9.0
MSW36045P	360mm - Pallet of 1000	1000	452.5
MSW36045P7	360mm - 7 Pallets of 1000	7000	3167.5
400mm overall depth*			
MSW40045	413mm - Bundle of 20	20	10.2
MSW40045P	413mm - Pallet of 1000	1000	512.5
MSW40045P7	413mm - 7 Pallets of 1000	7000	3587.5

† The overall depth of MultiStrut Joist (size) is calculated assuming 35mm top and bottom chord.

* The overall depth of MultiStrut Joist (size) is calculated assuming 45mm top and bottom chord.



Personalised. Local. Progressive.

Multinail Australia Pty. Ltd.

155 Burnside Road, Stapylton

QLD 4207, Australia

Phone: +61 (0)7 3297 3250

Email: enquiry@multinail.com

www.multinail.com.au